

# HINESVILLE AREA MPO



## Metropolitan Transportation Plan

TCC AND CAC MEETING

JULY 10, 2025



# AGENDA

---

- >WORK PLAN DEVELOPMENT PROCESS
- >DRAFT FISCALLY-CONSTRAINED PROJECTS
  - CAPACITY
  - OPERATIONS
- >NEXT STEPS
  - ADDRESS COMMENTS FROM GDOT, FHWA AND PUBLIC
  - ADOPTION

# Work Program Development

---

STEP 1: IDENTIFY UNIVERSE OF PROJECTS

STEP 2: ASSESS PROJECTS THROUGH PRIORITIZATION PROCESS

STEP 3: COORDINATION WITH LOCAL TECHNICAL STAFF

STEP 4A: ALLOCATION OF FUNDING SOURCES

STEP 4B: DEVELOP COST ESTIMATES

STEP 5: DEVELOP PRIORITIZED LIST OF PROJECTS

STEP 6: DEVELOP DRAFT MTP WORK PROGRAM

STEP 7: TCC/CAC REVIEW OF DRAFT MTP AND APPROVE (PENDING REVISIONS) FOR 30-DAY COMMENT PERIOD

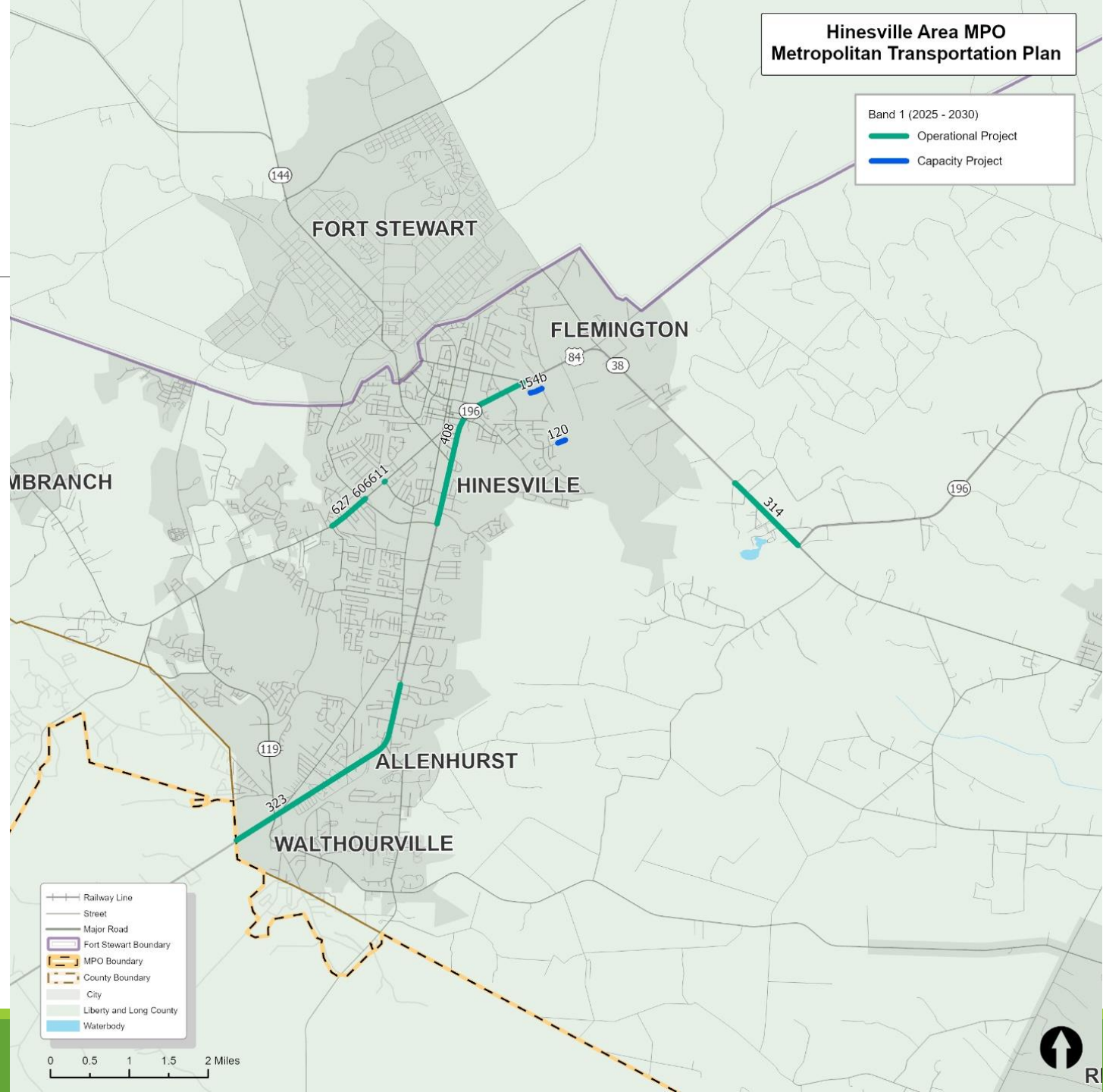
STEP 8: COMPLETE DRAFT MTP FOR 30-DAY COMMENT PERIOD - JUNE

**STEP 9: FINALIZE MTP FOR ADOPTION - AUGUST**

# Band 1 (2026-2030) Roadway Projects

Identified Projects			Band 1 (2026-2030)		
Name	Extents		CST	CST Year of Expenditure	Total Est. Cost
	From	To			
EV CHARGING STATION @ 1 LOC IN LIBERTY/MCINTOSH COUNTY			\$1,250,000	2026	\$1,280,000
I-95 FM FLORIDA STATE LINE TO S CAROLINA STATE LINE-ITS EXP	Florida state line	South Carolina state line	\$49,088,829	2026	\$49,088,829
SR 25 @ CR 166/BARRINGTON FERRY ROAD			\$3,101,831	2027	\$3,101,831
US 84 bridge at I-95 Widening	I-95 access	I-95 access			\$6,449,027
Sunbury Rd/Islands Hwy Widening	I-95 ramp	Tradeport Access Road			\$2,714,707
Hinesville Bypass (eastern segment)	US 84	SR 119			\$2,262,816
Islands Highway Widening	Sunbury Rd				\$4,990,380
Wallace Martin Realignment	US 84/SR 38	South of Tremain Dr.			\$767,751
WAAF / Midcoast Regional Joint Municipal Airport Access Road	Old Hines Road	Airport South Access			\$3,614,556
Barrington Ferry Rd Widening	US 17	SR 119			\$9,213,009
SR 119/General Screven Access Improvements	US 84	Fort Stewart Gate 1			\$1,891,782
Hwy 57 Intersection Upgrade	US 84 @Hwy 57				\$169,711

# Band 1 (2026-2030) Roadway Projects



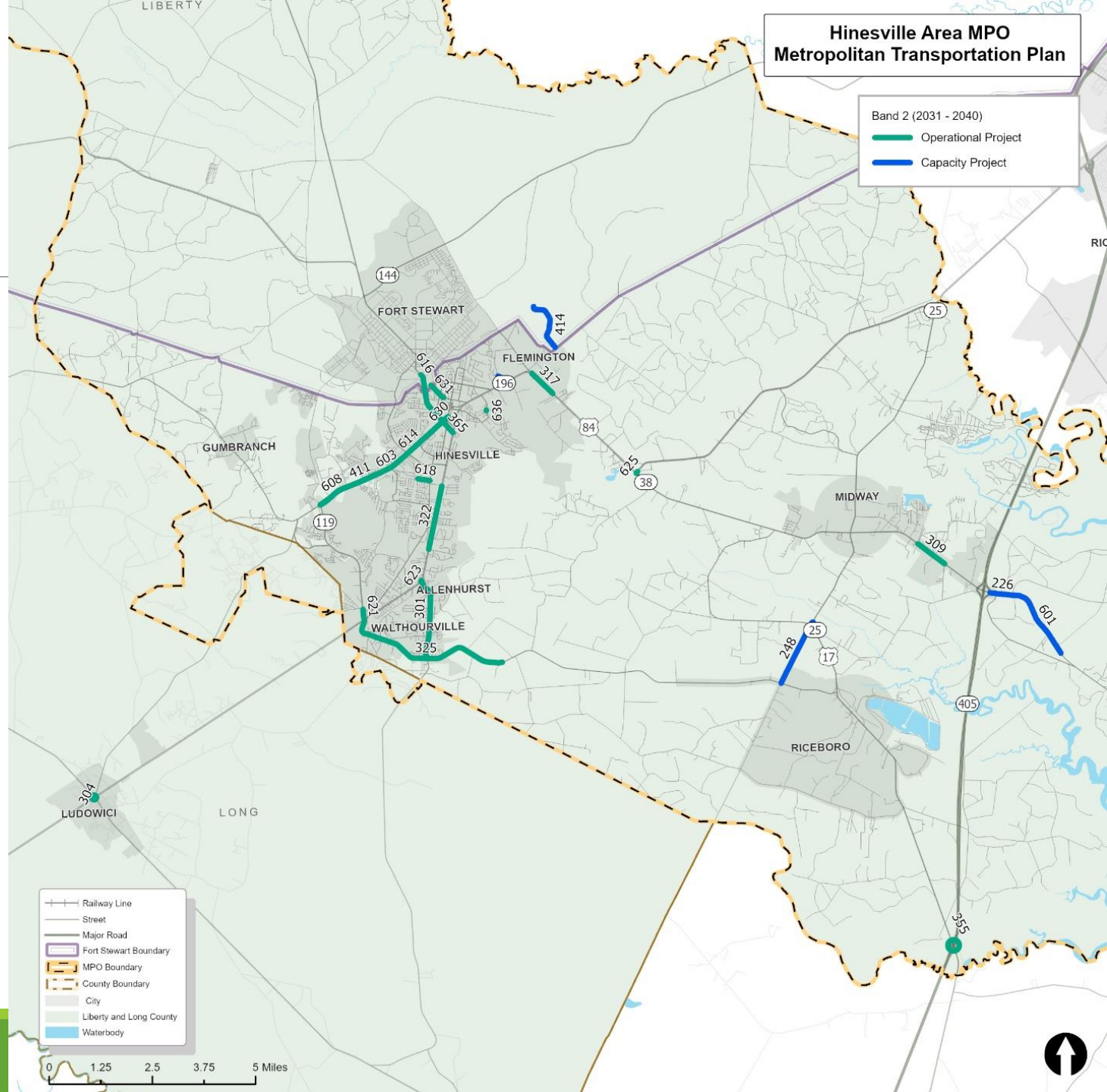
# Band 2 (2031-2040) Roadway Projects

Identified Projects			Band 2 (2031 - 2040)		
Name	Extents		CST	CST Year of Expenditure	Total Est. Cost
	From	To			
US 84 bridge at I-95 Widening	I-95 access	I-95 access			\$12,160,803
Sunbury Rd/Islands Hwy Widening	I-95 ramp	Tradeport Access Road	\$8,960,592	2035	\$9,397,694
Islands Highway Widening	Sunbury Rd		\$16,235,219	2034	\$17,046,980
Wallace Martin Realignment	US 84/SR 38	South of Tremain Dr.	\$2,560,169	2035	\$2,688,178
WAAF / Midcoast Regional Joint Municipal Airport Access Road	Old Hines Road	Airport South Access	\$10,240,676	2035	\$10,752,710
Barrington Ferry Rd Widening	US 17	SR 119	\$30,722,029	2035	\$32,258,131
SR 119/General Screven Access Improvements	US 84	Fort Stewart Gate 1	\$6,400,423	2035	\$6,720,444
Hwy 57 Intersection Upgrade	US 84 @Hwy 57		\$1,448,298	2040	\$1,776,730
US 84 and Dunlevie Intersection Improvements			\$128,008.45	2035	\$128,008
Pineland Ave Traffic Signal Installation	Pineland Ave		\$356,605.73	2032	\$408,792
EG Miles Pkwy Signal Timing Optimization	General Screven Way	15th St			\$231,939
EG Miles Pkwy Roadway Lighting Improvements	Veterans Pkwy	15th St	\$256,016.91	2035	\$303,609
Sharon St R-CUT Installation	Sharon St		\$640,042.27	2035	\$759,021
EG Miles Median Spot Installation	General Screven Way	15th St	\$640,042.27	2035	\$759,021
E.G. Miles Adaptive Signal Upgrades	15th Street	SR 196/Veterans Pkwy	\$768,050.73	2035	\$872,423
SR 119/ SR 196 / E.G. Miles Pkwy Access Management and Safety	15th Street	Pineland Avenue	\$768,050.73	2035	\$1,057,034
Miles Crossing Traffic Signal Installation	Miles Crossing		\$384,025.36	2035	\$436,212

# Band 2 (2031–2040) Roadway Projects

Airport Rd Operational Improvements	Hardman Rd	US 84	\$128,008.45	2035	\$128,008
Arlington Dr Traffic Signal Installation	Arlington Dr		\$384,025.36	2035	\$436,212
Liberty Regional Medical Center Intersection Lane Improvements	Liberty Regional Medical Center		\$448,029.59	2035	\$616,603
Live Oak Dr R-CUT Installation	Live Oak Dr		\$640,042.27	2035	\$759,021
Live Oak Church Rd High-T Intersection	Live Oak Church Rd		\$1,378,511	2038	\$1,881,756
Hendry St Streetscape	W General Screven Way	S Main St	\$133,026	2038	\$194,892
I-95 Intersection/road Improvements at Exit 67	I-95 Exit 67		\$1,378,511	2038	\$1,881,756
SR 119/Talmadge Rd Safety Enhancements	US 84	US 84/Hinesville Bypass	\$6,892,555	2038	\$9,408,782
W General Screven Way Operational Improvements	E Bultman Ave	Saunders Ave	\$137,851	2038	\$137,851
Leroy Coffey and US 84 Intersection Improvements			\$137,851	2038	\$137,851
SR 38 /US 84 Safety and Access Management from Flowers Dr to Topi Trl	Flowers Drive	Topi Trail	\$413,553	2038	\$564,527
Dunlevie Road Multimodal Safety Enhancements	US 84	SR 119	\$2,757,022	2038	\$3,763,513
SR 38 /US 84 Safety and Access Management from Spires Dr to Old Hines Rd	Spires Drive	Old Hines Road	\$413,553	2038	\$564,527
Eunice Road Operational Improvements	Brett Dr	S Main St	\$137,851	2038	\$137,851
Sandy Run at Tupelo Intersection Improvements			\$23,435	2038	\$34,333
SR 38 /US 84 Safety and Access Management from Charlie Butler to Peach St	Charlie Butler	Peach Street	\$413,553	2038	\$564,527
Curtis St High-T Intersection	Curtis St		\$1,448,298	2040	\$1,981,704

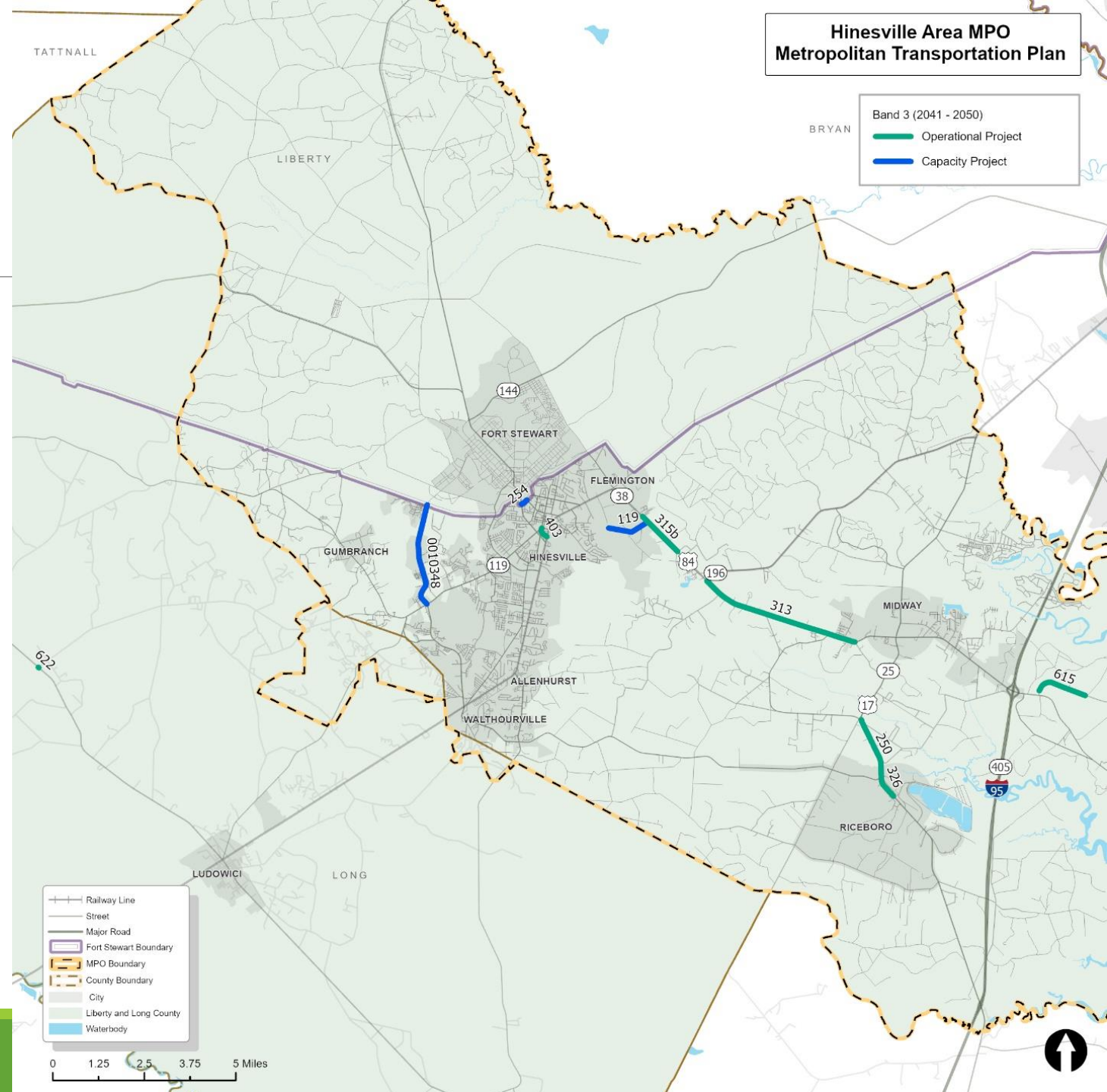
# Band 2 (2031-2040) Roadway Projects



# Band 3 (2041–2050) Roadway Projects

Identified Projects			Band 3 (2041 - 2050)		
Name	Extents		CST	CST Year of Expenditure	Total Est. Cost
	From	To			
Hinesville Bypass (eastern segment)	US 84	SR 119			\$11,876,045
Flemington Connector / Peacock Creek Rd	Flemington Village Drive	US 84 / SR 38	\$18,715,905	2043	\$25,975,694
Ryon Avenue Realignment and Corridor Improvements	SR 38/US 84/Oglethorpe Hwy	S. Main St @ Hendry St.	\$1,721,571	2047	\$2,371,809
Sunbury Road Corridor Improvements	Tradeport East Blvd	Islands Hwy	\$185,394	2050	\$185,394
Coastal Hwy/US 17 Enhancements	Railroad	rd Creek, includes SR 119 in	\$3,443,143	2047	\$4,743,618
Coastal Hwy/US 17 Widening from Barrington Ferry Rd to SR 119	Barrington Ferry Rd	SR 119/EB Cooper	\$17,215,714	2047	\$23,718,091
Elim Church Road Upgrade /Multimodal Improvements	SR 196	US 84 @ SR 301 - Ludowici			\$3,251,188
SR 38 /US 84 Safety and Access Management from Bacontown Rd to SR 196	Bacontown Rd	SR 196	\$3,443,143	2047	\$4,743,618
US 25 and Rye Patch Intersection Improvements			\$185,394	2050	\$185,394
Sandy Run Rd Safety Enhancements	Barrington Ferry Rd	SR 25	\$929,649	2047	\$1,383,219
Phase II SR 38 /US 84 Safety and Access Management: Multimodal enhancements cor	Brights Lake Road	John Martin	\$1,112,366	2050	\$1,517,010

# Band 3 (2041-2050) Roadway Projects



# Aspirations (Unfunded) Projects

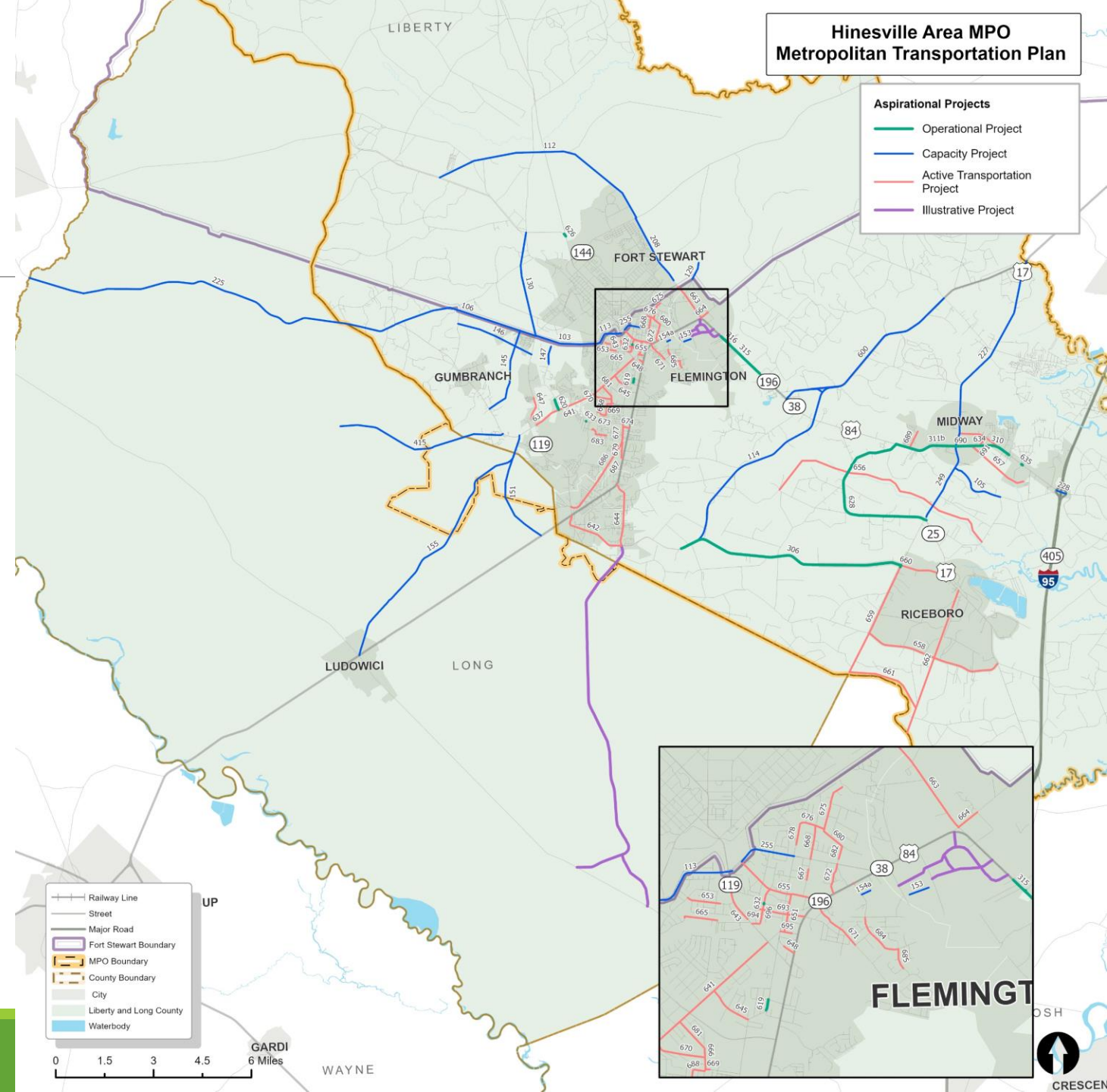
---

- >HINESVILLE BYPASS – EAST SEGMENT CST - \$80M
- >US 84 I-95 BRIDGE WIDENING CST - \$38M
- >GENERAL STEWART WAY WIDENING MAIN TO MEMORIAL CST - \$8M
- >I-95 WIDENING -\$500M
- >\$100M OPERATIONAL PROJECTS
  - SEGMENTS OF US 84 MEDIAN
  - COASTAL HIGHWAY ENHANCEMENTS
- >\$168M OF ACTIVE TRANSPORTATION PROJECTS
- >TWO PROJECTS ADDED:
  - TIBET ROAD AND KING ROAD – LONG COUNTY
  - FLEMINGTON TOWN CENTER SIGNAL MODIFICATION ON US 84

# Aspirations Projects (Beyond 2050)

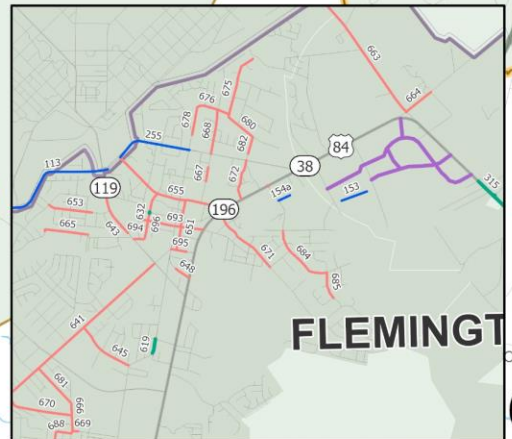
**Aspirational Projects**

- Operational Project
- Capacity Project
- Active Transportation Project
- Illustrative Project



**Map Legend**

- Railway Line
- Street
- Major Road
- Fort Stewart Boundary
- MPO Boundary
- County Boundary
- City
- Liberty and Long County
- Waterbody



# NEXT STEPS AND KEY MILESTONES

---

- > ADDRESS COMMENTS FROM FHWA AND GDOT
- > ADDRESS COMMENTS FROM PUBLIC - 30-DAY COMMENT PERIOD ENDS 7/14
- > POLICY BOARD ADOPTION OF MTP - AUGUST 14

# QUESTIONS?

---

Wade Carroll, AICP– Project Manager  
[wade.carroll@pondco.com](mailto:wade.carroll@pondco.com)