

HINESVILLE AREA MPO



Metropolitan Transportation Plan

TCC/CAC MEETINGS

MAY 29, 2025



AGENDA

- >WORK PLAN DEVELOPMENT PROCESS
- >UNIVERSE OF PROJECTS
- >AVAILABLE FUNDING
- >DRAFT FISCALLY-CONSTRAINED PROJECTS
 - CAPACITY
 - OPERATIONS
 - BICYCLE AND PEDESTRIAN
- >NEXT STEPS
 - DRAFT PLAN
 - ADOPTION

Work Program Development

STEP 1: IDENTIFY UNIVERSE OF PROJECTS

STEP 2: ASSESS PROJECTS THROUGH PRIORITIZATION PROCESS

STEP 3: COORDINATION WITH LOCAL TECHNICAL STAFF

STEP 4A: ALLOCATION OF FUNDING SOURCES

STEP 4B: DEVELOP COST ESTIMATES

STEP 5: DEVELOP PRIORITIZED LIST OF PROJECTS

STEP 6: DEVELOP DRAFT MTP WORK PROGRAM

STEP 7: TCC/CAC REVIEW OF DRAFT MTP AND APPROVE (PENDING REVISIONS) FOR 30-DAY COMMENT PERIOD

STEP 8: COMPLETE DRAFT MTP FOR 30-DAY COMMENT PERIOD - JUNE

STEP 9: FINALIZE WORK PLAN (AND MTP) FOR ADOPTION - AUGUST

Universe of Projects

> SOURCES

- MTP ANALYSIS (CRASHES, TRAVEL DEMAND MODEL, SAFETY)
- PREVIOUS STUDIES (E.G. MILES, SS4A)
- 2045 MTP
- TSPLOST
- GDOT WORK PROGRAM

> PROJECTS PROFILE

- 127 ROADWAY PROJECTS
 - 39 CAPACITY
 - 88 OPERATIONAL
- 52 BICYCLE AND PEDESTRIAN PROJECTS

Available Funding (2026–2050)

> COMBINATION OF GDOT ESTIMATED FUNDING AND 30% OF ANTICIPATED TSPLOST

- GDOT FUNDING = \$225.8M
- ANTICIPATED TSPLOST = \$94.9M
- TOTAL FUNDING FOR MTP PROJECTS = \$320.8M

> ORGANIZED INTO THREE BANDS

- BAND 1 – 2026-2030 = \$53.9M
- BAND 2 – 2031-2040 = \$122.8M
- BAND 3 – 2041-2050 = \$144.1M

Allocation of Funding

> FUNDING ALLOCATED BY IMPROVEMENT TYPE

- ROADWAY (90%) = \$288.7M
 - CAPACITY = \$227.2M
 - OPERATIONS = \$93.5M
- MAINTENANCE (FROM GDOT) = \$22.6M

Band	Capacity	Operations	Totals
Band 1	\$40,396,065	\$13,465,355	\$53,861,420
Band 2	\$85,989,907	\$36,852,817	\$122,842,724
Band 3	\$100,836,302	\$43,215,558	\$144,051,860
TOTALS	\$227,222,274	\$93,533,730	\$320,756,004

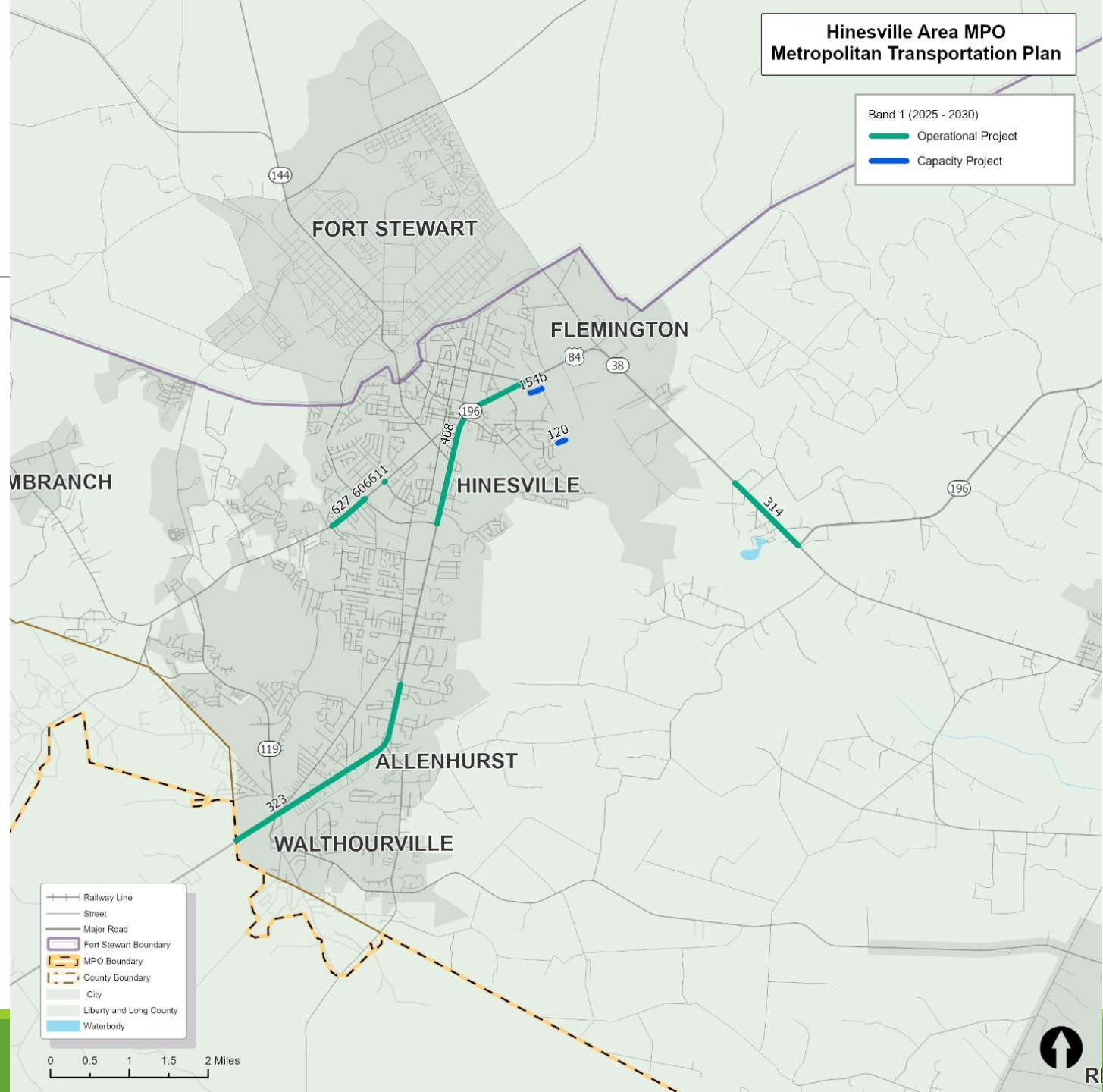
GDOT Funded Projects

- > HINESVILLE BYPASS CONSTRUCTION (2025)
- > US 17/BARRINGTON FERRY ROAD ROUNDABOUT (2027)
- > LEWIS FRASIER ROAD BRIDGE AT PEACOCK CREEK (2025)
- > SIDEWALKS ALONG LINK STREET, NORMAN STREET AND GROVE PARK APTS (2025)
- > EV CHARGING STATION (2026)
- > ITS ALONG I-95 (2026)
- > RESURFACINGS AND PAVEMENT MARKINGS (2025)

Band 1 (2025–2030) Roadway Projects

Identified Projects			Band 1 (2025-2030)		
Name	Extents		CST	CST Year of Expenditure	Total Est. Cost
	From	To			
EV CHARGING STATION @ 1 LOC IN LIBERTY/MCINTOSH COUNTY			\$2,500,000	2025	\$2,560,000
I-95 FM FLORIDA STATE LINE TO S CAROLINA STATE LINE-ITS EXP			\$49,088,829	2026	\$49,088,829
SR 25 @ CR 166/BARRINGTON FERRY ROAD			\$1,525,893	2025	\$1,525,893
SR 25 @ CR 166/BARRINGTON FERRY ROAD			\$1,575,938	2027	\$1,575,938
US 84 bridge at I-95 Widening	I-95 access	I-95 access			\$6,449,027
Sunbury Rd/Islands Hwy Widening	I-95 ramp	Tradeport Access Road			\$2,714,707
Hinesville Bypass (eastern segment)	US 84	SR 119			\$2,262,816
Islands Highway Widening	Sunbury Rd				\$4,990,380
Wallace Martin Realignment	US 84/SR 38	South of Tremain Dr.			\$767,751
WAAF / Midcoast Regional Joint Municipal Airport Access Road	Old Hines Road	Airport South Access			\$3,614,556
Sandy Run/Patriots Trail Connector	Sandy Run Dr	Patriots Trail	\$1,697,112	2030	\$2,264,647
Sandy Run Drive Extension	Sandy Run Dr	Peacock Creek Rd	\$1,131,408	2030	\$1,509,765
Barrington Ferry Rd Widening	US 17	SR 119			\$10,570,699
15th St from SR 196 to Gate 7 @ Fort Stewart Widening	EG Miles Pkwy	Fort Stewart boundary			\$1,131,408
SR 38C/General Stewart Way Widening from Main St to Memorial Dr	Main St	Memorial Drive			\$678,845
SR 38C/General Stewart Way Widening From Memorial Dr to General Screv	Memorial Drive	General Screven Way			\$339,422
SR 196 W (from Rye Patch Rd) Widening	Rye Patch Rd/SR 196	Hodges Rd/Central Conn			\$2,262,816
SR 38 /US 84 Safety and Access Management from Topi Trl to Airport Rd	Topi Trail	Airport Road	\$2,262,816	2030	\$3,132,670
US 84 Adaptive Signal Upgrades	Veterans Parkway	General Stewart Way	\$678,845	2030	\$773,401
Veterans Pkwy Intersection Lane Improvements	Veterans Pkwy		\$226,282	2030	\$257,800
SR 119/EG Miles Pkwy Crossing Improvements	Pineland Ave	Veterans Pkwy	\$98,433	2030	\$146,114
SR 119/General Screven Access Improvements	US 84	Fort Stewart Gate 1			\$2,174,634
SR 38 /US 84 Safety and Access Management from SR 196 to Bright Lakes	SR 196	Brights Lake Rd	\$395,993	2030	\$526,471
Deal St Roundabout Installation	Deal St		\$3,959,929	2030	\$5,878,165
Hwy 57 Intersection Upgrade	US 84 @Hwy 57				\$169,711

Band 1 (2025-2030) Roadway Projects



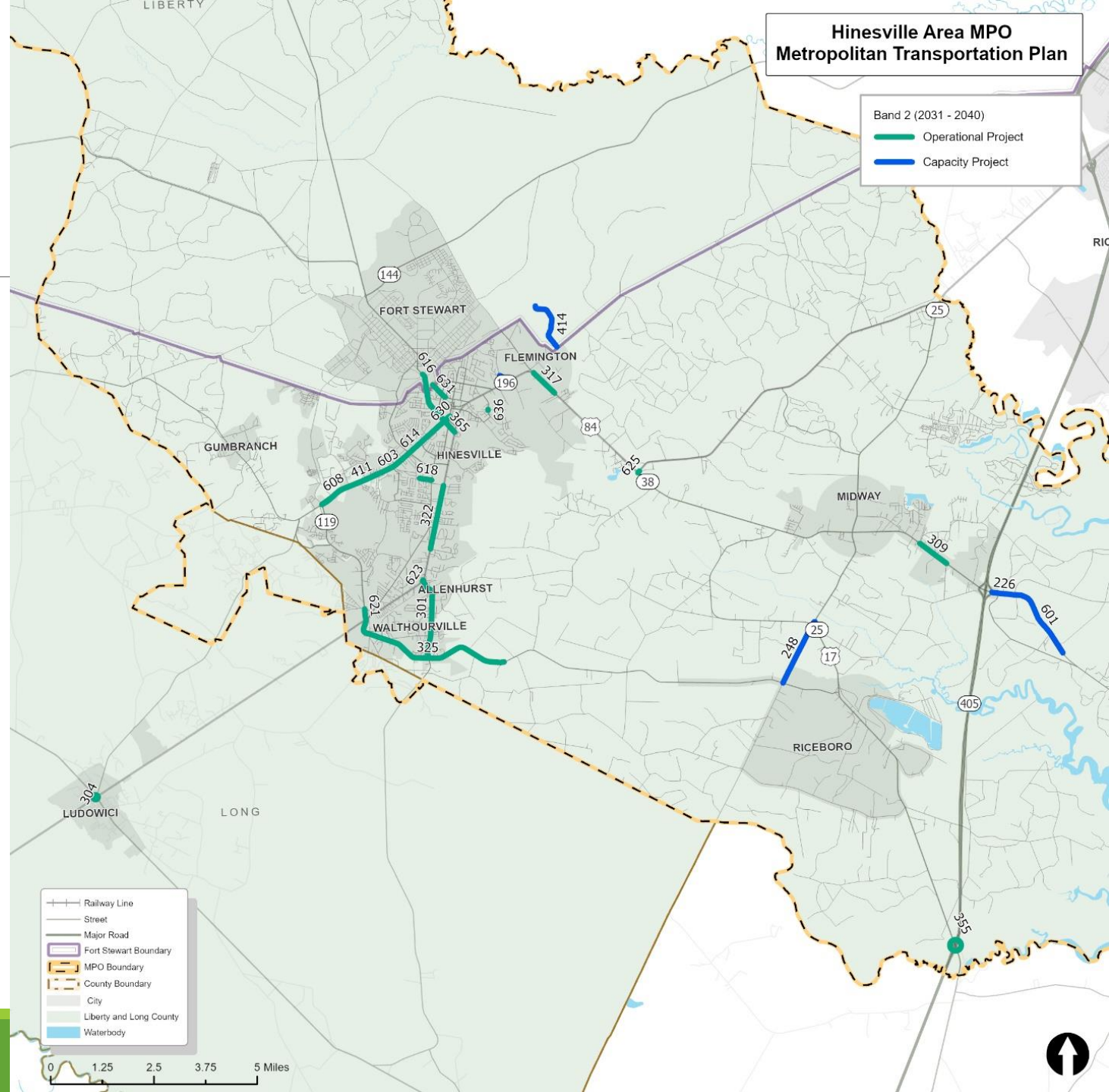
Band 2 (2031-2040) Roadway Projects

Identified Projects			Band 2 (2031 - 2040)		
Name	Extents		CST	CST Year of Expenditure	Total Est. Cost
	From	To			
US 84 bridge at I-95 Widening	I-95 access	I-95 access			\$12,160,803
Sunbury Rd/Islands Hwy Widening	I-95 ramp	Tradeport Access Road	\$8,960,592	2035	\$9,397,694
Islands Highway Widening	Sunbury Rd		\$16,235,219	2034	\$17,046,980
Wallace Martin Realignment	US 84/SR 38	South of Tremain Dr.	\$2,560,169	2035	\$2,688,178
WAAF / Midcoast Regional Joint Municipal Airport Access Road	Old Hines Road	Airport South Access	\$10,240,676	2035	\$10,752,710
Sandy Run/Patriots Trail Connector	Sandy Run Dr	Patriots Trail			\$1,697,112
Sandy Run Drive Extension	Sandy Run Dr	Peacock Creek Rd			\$1,131,408
Barrington Ferry Rd Widening	US 17	SR 119	\$30,722,029	2035	\$30,722,029
SR 119/General Screven Access Improvements	US 84	Fort Stewart Gate 1	\$6,400,423	2035	\$6,400,423
Hwy 57 Intersection Upgrade	US 84 @Hwy 57		\$1,448,298	2040	\$1,773,241
US 84 and Dunlevie Intersection Improvements			\$128,008.45	2035	\$128,008
Pineland Ave Traffic Signal Installation	Pineland Ave		\$356,605.73	2032	\$408,792
EG Miles Pkwy Signal Timing Optimization	General Screven Way	15th St			\$231,939
EG Miles Pkwy Roadway Lighting Improvements	Veterans Pkwy	15th St	\$256,016.91	2035	\$302,992
Sharon St R-CUT Installation	Sharon St		\$640,042.27	2035	\$757,479
EG Miles Median Spot Installation	General Screven Way	15th St	\$640,042.27	2035	\$757,479
E.G. Miles Adaptive Signal Upgrades	15th Street	SR 196/Veterans Pkwy	\$768,050.73	2035	\$872,423
SR 119/ SR 196 / E.G. Miles Pkwy Access Management and Safety	15th Street	Pineland Avenue	\$768,050.73	2035	\$1,055,184
Miles Crossing Traffic Signal Installation	Miles Crossing		\$384,025.36	2035	\$436,212

Band 2 (2031-2040) Roadway Projects

Identified Projects			Band 2 (2031 - 2040)		
Name	Extents		CST	CST Year of Expenditure	Total Est. Cost
	From	To			
Airport Rd Operational Improvements	Hardman Rd	US 84	\$128,008.45	2035	\$128,008
Arlington Dr Traffic Signal Installation	Arlington Dr		\$384,025.36	2035	\$436,212
Liberty Regional Medical Center Intersection Lane Improvements	Liberty Regional Medical Center		\$448,029.59	2035	\$615,524
Live Oak Dr R-CUT Installation	Live Oak Dr		\$640,042.27	2035	\$757,479
Live Oak Church Rd High-T Intersection	Live Oak Church Rd		\$1,378,511	2038	\$1,878,435
Hendry St Streetscape	W General Screven Way	S Main St	\$133,026	2038	\$193,931
I-95 Intersection/road Improvements at Exit 67	I-95 Exit 67		\$1,378,511	2038	\$1,878,435
SR 119/Talmadge Rd Safety Enhancements	US 84	US 84/Hinesville Bypass	\$6,892,555	2038	\$9,392,176
W General Screven Way Operational Improvements	E Bultman Ave	Saunders Ave	\$137,851	2038	\$137,851
Leroy Cofer and US 84 Intersection Improvements			\$137,851	2038	\$137,851
SR 38 /US 84 Safety and Access Management from Flowers Dr to Topi Trl	Flowers Drive	Topi Trail	\$413,553	2038	\$564,023
Dunlevie Road Multimodal Safety Enhancements	US 84	SR 119	\$2,757,022	2038	\$3,760,151
SR 38 /US 84 Safety and Access Management from Spires Dr to Old Hines Rd	Spires Drive	Old Hines Road	\$413,553	2038	\$564,023
Eunice Road Operational Improvements	Brett Dr	S Main St	\$137,851	2038	\$137,851
Sandy Run at Tupelo Intersection Improvements			\$23,435	2038	\$34,248
SR 38 /US 84 Safety and Access Management from Charlie Butler to Peach St	Charlie Butler	Peach Street	\$413,553	2038	\$564,023
Memorial Dr Median Improvements	General Stewart Way	Rebecca St	\$6,893	2038	\$10,073
Curtis St High-T Intersection	Curtis St		\$1,448,298	2040	\$1,978,214

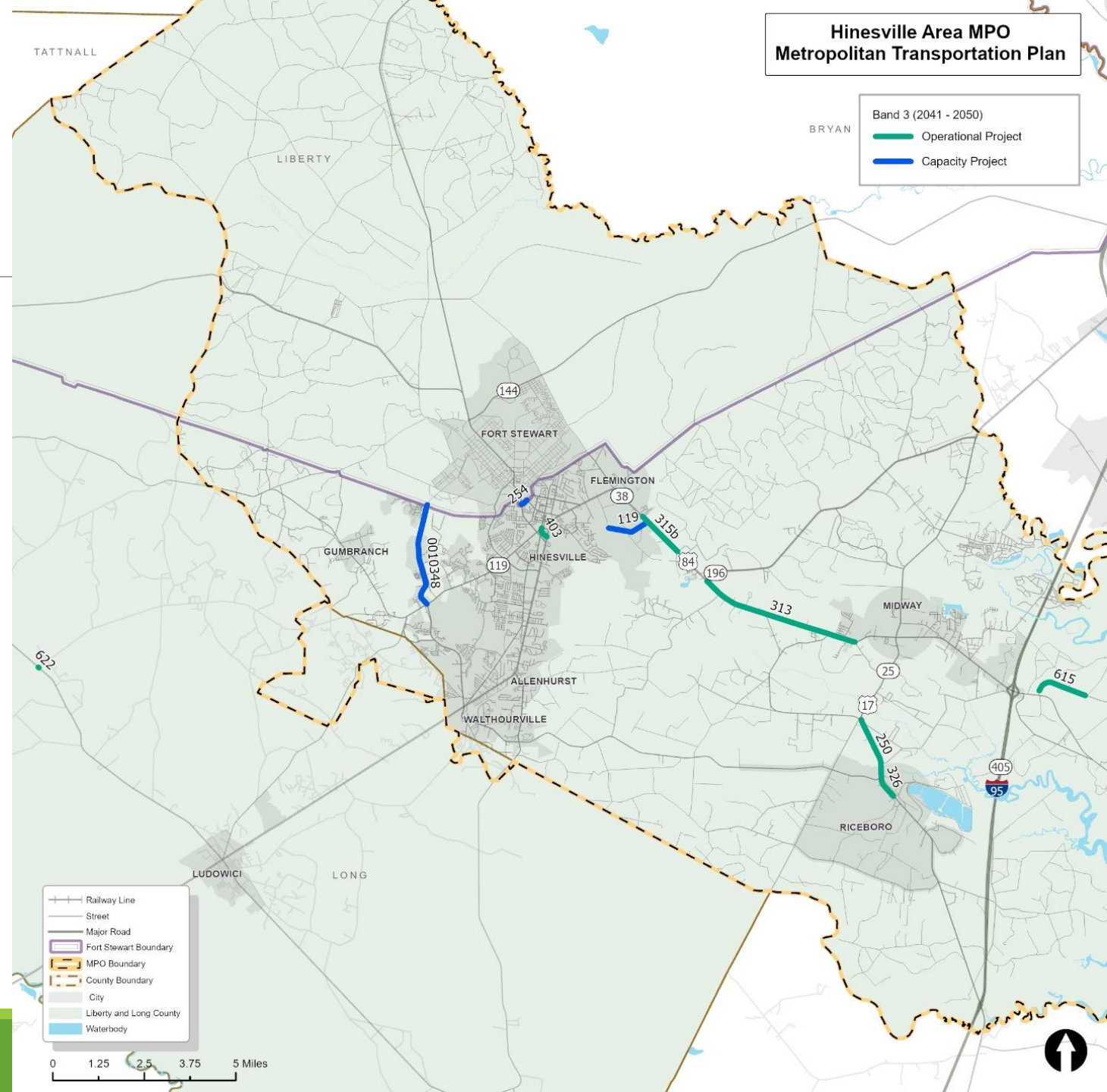
Band 2 (2031-2040) Roadway Projects



Band 3 (2041–2050) Roadway Projects

Identified Projects			Band 3 (2041 - 2050)		
Name	Extents		CST	CST Year of Expenditure	Total Est. Cost
	From	To			
Flemington Connector / Peacock Creek Rd	Flemington Village Drive	US 84 / SR 38	\$19,183,802	2044	\$26,443,591
Ryon Avenue Realignment and Corridor Improvements	38/US 84/Oglethorpe H	S. Main St @ Hendry St.	\$1,853,944	2050	\$2,504,182
Sunbury Road Corridor Improvements	Tradeport East Blvd	Islands Hwy	\$185,394	2050	\$185,394
Coastal Hwy/US 17 Enhancements	Railroad	rd Creek, includes SR 119 in	\$3,707,888	2050	\$5,008,364
Coastal Hwy/US 17 Widening from Barrington Ferry Rd to SR 119	Barrington Ferry Rd	SR 119/EB Cooper	\$18,539,441	2050	\$25,041,818
Elim Church Road Upgrade /Multimodal Improvements	SR 196	US 84 @ SR 301 - Ludowici			\$3,251,188
SR 38 /US 84 Safety and Access Management from Bacontown Rd to SR 19	Bacontown Rd	SR 196	\$3,707,888	2050	\$5,008,364
US 25 and Rye Patch Intersection Improvements			\$185,394	2050	\$185,394
Sandy Run Rd Safety Enhancements	Barrington Ferry Rd	SR 25			\$453,570
Phase II SR 38 /US 84 Safety and Access Management: Mutimodal enhance	Brights Lake Road	John Martin	\$1,112,366	2050	\$1,513,039

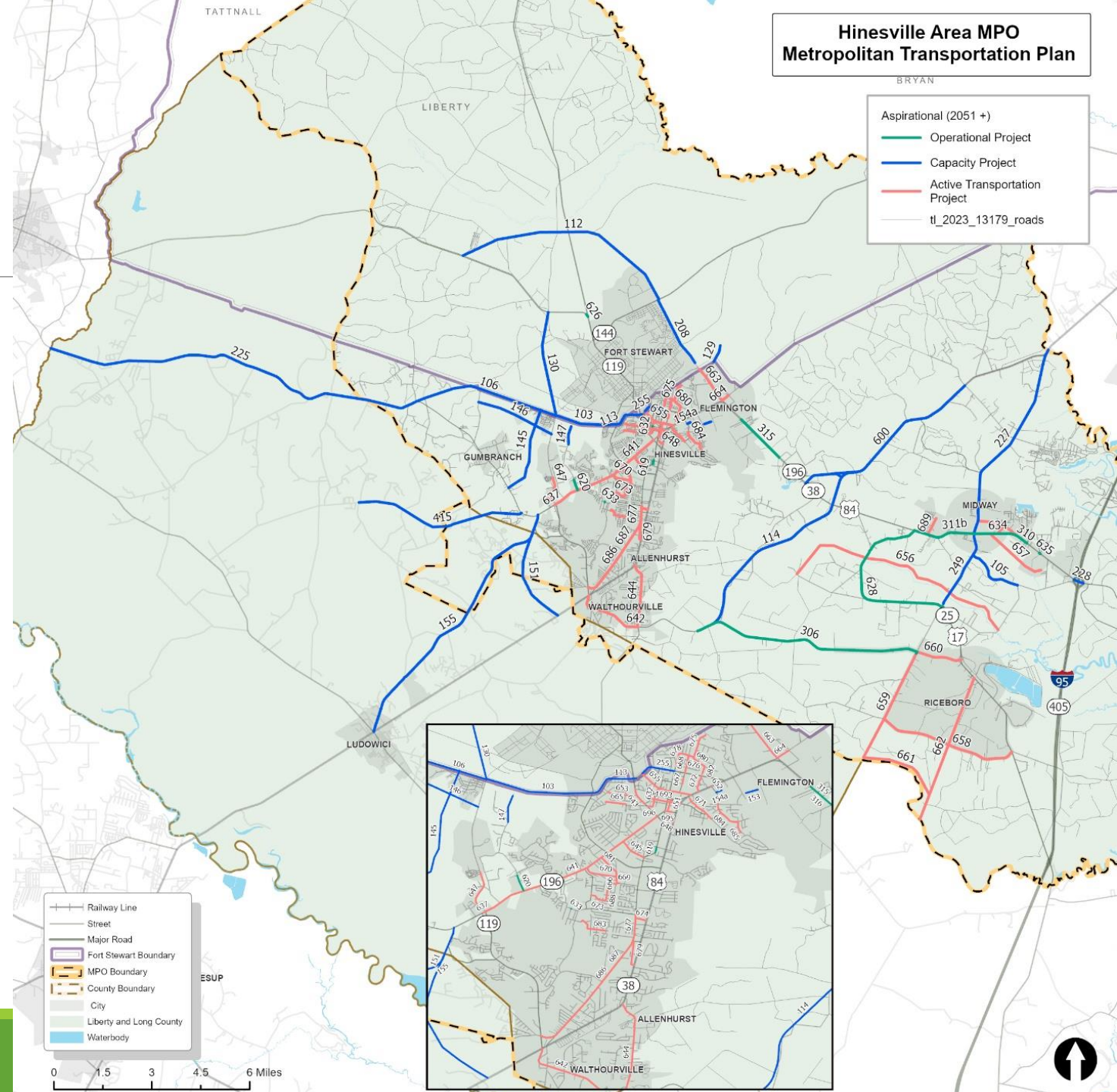
Band 3 (2041-2050) Roadway Projects



Aspirations (Unfunded) Projects

- > HINESVILLE BYPASS - EAST SEGMENT CST - \$80M
- > US 84 I-95 BRIDGE WIDENING CST - \$38M
- > GENERAL STEWART WAY WIDENING MAIN TO MEMORIAL CST - \$8M
- > I-95 WIDENING - \$500M
- > \$100M OPERATIONAL PROJECTS
 - SEGMENTS OF US 84 MEDIAN
 - COASTAL HIGHWAY ENHANCEMENTS
- > \$168M OF ACTIVE TRANSPORTATION PROJECTS

Aspirations Projects (Beyond 2020)



NEXT STEPS AND KEY MILESTONES

- >REVIEW AND REVISION OF DRAFT MTP – MAY 2025
- >POLICY BOARD APPROVAL OF MTP FOR 30-DAY COMMENT PERIOD – JUNE 10
- >TCC/CAC ENDORSEMENT OF 2050 MTP – JULY 10
- >POLICY BOARD ADOPTION OF MTP FOR 30-DAY COMMENT PERIOD – AUGUST 14

QUESTIONS?

Wade Carroll, AICP– Project Manager
wade.carroll@pondco.com