



Hinesville Area Metropolitan Planning Organization

100 Main Street, Suite 7520 Hinesville, Georgia 31313
Phone: 912-408-2030 Fax: 888-320-8007

Chairman Donald Lovette, Policy Committee Chair

Jeff Ricketson, AICP, Director

AGENDA

Hinesville Area Metropolitan Planning Organization Technical Coordinating Committee (TCC) Historic Court House – Room 2100 March 26, 2020 @ 9:00 AM

1. Call to Order
2. Introductions
3. Approval of Minutes
4. Old Business
 - a. Project and Transit Update
 - b. Transportation Public Comment Log
5. New Business
 - a. 2018-2021 TIP Amendment #5 (action)
 - b. Draft FY 2021 Unified Planning Work Program: 30-day review (action)
 - c. 2020-2045 MTP status update and prioritization exercise
 - d. FY2020 UPWP Amendment #6 (administrative)
6. Other Business
7. Public Comments
 - a. Call for Comments from the Public
8. Schedule
 - a. Next regularly scheduled meeting is May 14, 2020
9. Adjourn

If unable to attend in person, please
join in via our Zoom meeting at:

<https://rsandh.zoom.us/j/786389359>

Meeting ID: 786 389 359

Dial 877 369 0926 US Toll-free

Meeting ID: 786 389 359

Hinesville Area Metropolitan Planning Organization



100 Main Street, Suite 7520 Hinesville, Georgia 31313
Phone: 912-408-2030 Fax: 888-320-8007

Chairman Donald Lovette, Policy Committee Chair

Jeff Ricketson, AICP, Director

HAMPO TCC MINUTES: March 26, 2020

The Technical Coordinating Committee (TCC) on Transportation met **on-line** due to COVID-19 Assembly Restrictions on March 26, 2020 at 9:00 AM.

1) CALL TO ORDER:

- Joey Brown, Chair, called the meeting to order and noted a quorum was not present, however several minutes into the meeting two members joined and there was a quorum present.

2) INTRODUCTIONS: Introductions were made.

Members Present: Joey Brown, Jeff Ricketson, Ned Green, Trent Long, Byron Cowart, Clemontine Washington, Chuck Scragg, Paul Simonton, Mayor Paul Hawkins, Robert Norby, Ryan Walker.

Members Absent: Kyle Wemett, Dr. Franklin Perry, Mayor Joe Harris, Mayor Thomas Hines, Mayor Richard Strickland, Mayor Larry Baker, Ron Tolley and Kenny Howard.

Non-Voting Members Present: Ann-Marie Day.

Non-Voting Members Absent: Allen Burns, Robert Buckley, Don Masisak, Theodis Jackson and John Lyles.

Participating: Rachel Hatcher, Tim Byler.

Staff Present: Kelly Wiggins, Rachel Hatcher with RS&H.

3) APPROVAL OF MINUTES:

- Paul Simonton made the motion to approve the January 9, 2019 minutes, seconded by Trent Long, and all voted in favor.

4) OLD BUSINESS:

Project and Transit Update:

a) GDOT:

a. Design Stage:

- US 84 Freight Connector – Preliminary plans at 75%, Environmental at 60% scheduled for 2021
- Flemington Curve Improvements – Preliminary Plans at 100%, Environmental at 100%, Final plans at 25%
- Taylor's Creek Bridge – Preliminary plans at 100%, Environmental at 95% and final plans at 95%

b. Under Construction:

- I-95 Resurfacing – 95% complete, anticipated completion Summer 2019, some corrective work being done mostly on ramps.
- General Stewart Way from Oglethorpe to General Screven anticipated completion Summer 2020.

LOCAL:

a. Under Construction:

- S. Main Sidewalk – 97%-- almost complete, in process of obtaining come easements. Paul Simonton stated this project should be complete within the next two weeks.

b. T-SPLOST:

- Jeff stated that the T-SPLOST referendum is rescheduled for May 19, 2020.

LIBERTY TRANSIT: Ridership is still climbing.

b) Transportation Comment Log:

- a. There was a complaint from Commissioner Stevens to ask GDOT to restrict right turn on red movements from SR 186/Leroy Coffey Highway onto US 84/SR 38. We received a letter from GDOT in early March and they have indicated that they will not change this signal. Joey Brown stated that they will be pursuing other avenues for this issue.
- b. Jeff asked about the previous complaint about the lack of a crosswalk between Midway Museum and the Midway Cemetery. Byron stated that this is in the hopper being considered.

5) NEW BUSINESS:

- a) **2018-2021 TIP Amendment # 5:** Rachel stated the action for today is GDOT Planning Office is requesting an amendment to the FY 2018-2021 Transportation Improvement Plan (TIP) and the MPO's LRTP/MTP.

Trent Long made a motion to recommend release of the TIP amendment #5 for 30-day public comment for the Lewis Frasier Road bridge replacement. The motion was seconded by Clemontine Washington. The vote was unanimous in favor.

- b) **Draft FY 2021 Unified Planning Work Program 30-day review:** A motion was made by Paul Simonton to recommend release of the draft FY 2021 UPWP for 30-day comment. The motion was seconded by Chuck Scraggs. The motion passed unanimously in favor.
- c) **2020-2045 MTP status update and prioritization exercise:** Rachel presented this update to the committee. Rachel will email the priority ranking exercise to the committee members for participation.
- d) **FY 2020 UPWP Amendment # 6:** Rachel explained this amendment to the committee.

6) OTHER BUSINESS: None.

7) **PUBLIC COMMENTS:** None.

8) **SCHEDULE:**

- a) The next regularly scheduled TCC meeting will be May 14, 2020.

ADJOURN:

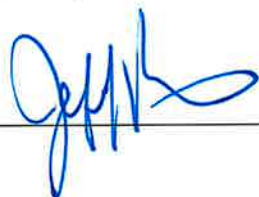
- Clemontine Washington made the motion to adjourn, seconded by Trent Long, and all voted in favor.

APPROVED:



Joey Brown, Chair

ATTEST:



Hinesville Area Metropolitan Planning Organization

**Technical Coordinating Committee (TCC)
Historic Court House – LCPC Conference Room**

March 26, 2020 @ 9:00 A.M.



AGENDA
Hinesville Area Metropolitan Planning Organization
Technical Coordinating Committee (TCC)
Historic Court House – Room 2100
March 26, 2020 @ 9:00 AM

1. Call to Order
2. Introductions
3. Approval of Minutes
4. Old Business
 - a. Project and Transit Update
 - b. Transportation Public Comment Log
5. New Business
 - a. 2018-2021 TIP Amendment #5 (action)
 - b. Draft FY 2021 Unified Planning Work Program: 30-day review (action)
 - c. 2020-2045 MTP status update and prioritization exercise
 - d. FY2020 UPWP Amendment #6 (administrative)
6. Other Business
7. Public Comments
 - a. Call for Comments from the Public
8. Schedule
 - a. Next regularly scheduled meeting is May 14, 2020
9. Adjourn



3. Approval of Minutes

Motion to Approve the TCC Minutes of:

January 8, 2020

4a. Project and Transit Update

- **GDOT:**
 - Design Stage:
 - US 84 Connector – R.O.W. 2021
 - Flemington Curve Improvements – let 2020
 - Taylors Creek Bridge – let Summer 2020
 - Under Construction:
 - I-95 Resurfacing – Approximately 95% Complete
 - SR 38/US 84 Resurfacing from east of OC Martin Drive to east of I-95 – let March
- **LOCAL:**
 - Under Construction:
 - South Main Sidewalk – 97% Complete
 - TSPLOST Referendum:
 - Referendum postponed due to social distancing guidance from CDC and Local State of Emergency Declarations



4a. Project and Transit Update

GDOT/Liberty County Projects Status Report

Thursday, March 26, 2020

#	Projects	PI	PE	ROW	CST	Environmental Activities	Preliminary Plans	Final Plans	Remarks
1	SR 38 Connector from SR 38/US 84 to SR 119	522570-	Auth	2020	LR	60%	75%		Preliminary design and environmental work ongoing
2	SR 38/US 84 @ CR 73/Old Sunbury Road	0011730	Auth	Auth	LUMP	100%	100%	25%	Right of way acquisition underway.
3	SR 119 @ Taylors Creek - Bridge Replacemen	0013750	Auth	Auth	2020	95%	100%	95%	Final plans submitted

Active Construction Projects

#	Project Description	Contractor	Award Amount	% Complete	Anticipated Completion Date
1	19.56 miles of milling and plant mix resurfacing on I-95/SR 405 from N of South Newport River bridge to S of bridge over CSX railroad (Bryan Co.)	American Industries, Inc.	\$8,749,478.60	95%	Summer 19
2	1.686 miles of milling and plant mix resurfacing on SR 38 Conn from SR 119 to E of US 84/SR 38	East Coast Asphalt, LLC	\$751,589.10		Summer 20
3	12.55 miles of milling, inlay and plant mix resurfacing on SR 38/US 84 from E of CS 519/OC Martin Dr. to E of I-95				Let in March



4b. Transportation Public Comment Log

Previous request to restrict right turn on red movements from SR 196 / Leroy Coffer Highway onto US 84/ SR 38



Russell R. McMurtry, P.E., Commissioner
One Georgia Center
600 West Peachtree Street, NW
Atlanta, GA 30308
(404) 631-1000 Main Office

March 9, 2020

Hinesville Area Metropolitan Planning Organization
Attn: Jeff Ricketson, AICP
100 Main Street, Suite 7520
Hinesville, Georgia 31313

Re: Request for T.E Study on SR 38/US 84 @ SR 196 East, Liberty County

Dear Mr. Ricketson:

This letter is to advise that our office has reviewed your correspondence, dated February 12th, 2020, regarding the intersection of SR 38/US 84 (E. Oglethorpe Hwy) at SR 196 (Leroy Coffer Hwy) for the installation of a "No Turn On Red" sign.

A review of this intersection has determined that the existing signage and layout for the dual rights is in accordance with the MUTCD (Manual on Uniform Traffic Control Devices) and Departmental Policies and Guidelines. A review of the crashes indicated there were twenty-three (23) reported crashes in 2019, of which, none were a result of a collision between a right turning vehicle on SR 196 and a westbound vehicle on SR 38. Majority of these crashes were rear ends and side swipes on SR 196. Also, restricting right turning traffic from SR 196 to SR 38 during a red traffic signal will reduce the level of service for that approach and cause major delays. For these reasons, we will maintain the current signal operation and traffic movements.

In an effort to improve driver visibility of the right turning vehicles and rear ends, our forces installed a "Right On Red After Stop" overhead sign this past January. We will continue to monitor this intersection to see if there are any changes to traffic patterns or increases to traffic volumes.

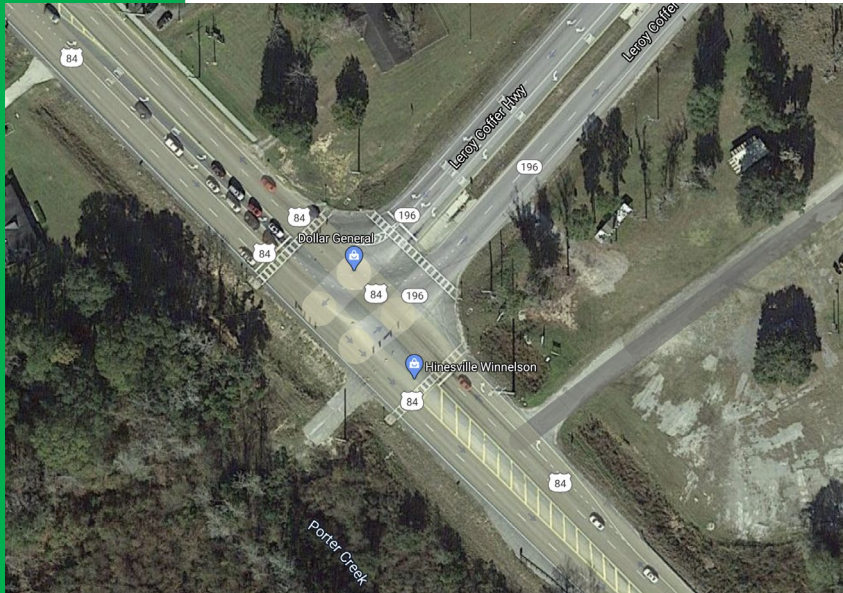
If there are any question or if further information or assistance is needed, please contact our office at (912) 530-5703 or mail any concerns to P.O. Box 610 Jesup, GA 31598-0610.

Sincerely,

For: Robert T. McCall
District Engineer

A handwritten signature in blue ink, appearing to read "Cynthia Y. Phillips".

By: Cynthia Y. Phillips
District Traffic Engineer



5a. 2018 – 2021 TIP Amendment #5 (action)

GDOT Planning Office is requesting an amendment to the FY 2018 – 2021 Transportation Improvement Plan (TIP) and the MPO's LRTP/MTP.

New Project – Bridge Replacement

PI # 0016567 – CR 171/LEWIS FRASIER ROAD @ PEACOCK CREEK

County – Liberty

Sponsor – GDOT

Project Length – 0.40 Miles

***ROW, CST, & UTL are currently in Long Range**

Status	Phase	Fund Source	FY 2021
Proposed	PE	Z231	\$675,000 <i>(\$540,000 Fed and \$135,000 State)</i>
Proposed	ROW	Z231/Local	--
Proposed	CST	Z231	--
Proposed	UTL	Z231	--

5a. 2018 – 2021 TIP Amendment #5 (action)

Suggested Motion:

Motion to recommend that the Policy Committee release Draft 2018 – 2021 TIP Amendment #5 for a 30-day public comment period.

5b. Draft FY 2021 UPWP: 30-day review (action)

- UPWPs are an annual statement of work identifying the planning priorities and activities of the MPO
- Used to govern work programs for the expenditure of Federal and State planning funds
- UPWPs include:
 - Descriptions of planning activities and products
 - Responsible parties
 - Timeframes for completing the work
 - Costs for each identified effort
 - Funding Sources

March: CAC/TCC
Review and
Recommend

April/May: 30 Day
Public and Agency
Review / Comment

June: PC Adopts FY
2021 UPWP

April: PC Releases
for Public Comment

May: CAC/TCC Review
Final Draft and
Recommend

June: FHWA
Certifies UPWP



5b. Draft FY 2021 UPWP: 30-day review (action)

- Complete 2045 MTP
- Complete TIP Update (2021 – 2024)
- Support local, state, and federal efforts to enhance Multimodal Accessibility and Safety
- Supporting and Monitoring US Census count efforts

FY 2021 Federal Planning Funds (Highway PL)				
Highway Work Elements	FHWA - Fed (80%)	State -GDOT (0%)	Local (20%)	Subtotal PL Funds
1. ADMINISTRATION				
1.1 Program Coordination	9,600.00	0.00	2,400.00	12,000.00
1.2 Operations, Admin.	19,200.00	0.00	4,800.00	24,000.00
1.3 Training/ Employee Education	3,200.00	0.00	800.00	4,000.00
1.4 Equipment and Supplies	0.00	0.00	0.00	0.00
1.5 Contracts/Grants	4,800.00	0.00	1,200.00	6,000.00
1.6 Unified Planning Work Program	6,400.00	0.00	1,600.00	8,000.00
Subtotal Task 1	43,200.00	0.00	10,800.00	54,000.00
2. PUBLIC INVOLVEMENT				
2.1 Community Outreach/Education	8,000.00	0.00	2,000.00	10,000.00
2.2 Environmental Justice/ Title VI	3,200.00	0.00	800.00	4,000.00
2.3 Participation Plan	800.00	0.00	200.00	1,000.00
Subtotal Task 2	12,000.00	0.00	3,000.00	15,000.00
3. DATA COLLECTION				
3.1 Socio-Economic Data	800.00	0.00	200.00	1,000.00
3.2 Land Use Monitoring	8,000.00	0.00	2,000.00	10,000.00
3.4 Transportation Surveys, Models, and Analysis	1,600.00	0.00	400.00	2,000.00
3.5 System Monitoring	3,200.00	0.00	800.00	4,000.00
Subtotal Task 3	13,600.00	0.00	3,400.00	17,000.00
4. SYSTEM PLANNING				
4.5 Bike/Ped	6,400.00	0.00	1,600.00	8,000.00
4.7 GIS Development and Applications	11,200.00	0.00	2,800.00	14,000.00
4.10 Freight Planning	1,600.00	0.00	400.00	2,000.00
4.11 Metropolitan Transportation Plan	16,032.81	0.00	4,008.20	20,041.01
4.12 Transportation Improvement Plan	11,200.00	0.00	2,800.00	14,000.00
Subtotal Task 4	28,832.81	0.00	7,208.20	36,041.01
Total Federal Planning Funds (PL)	97,632.81	0.00	24,408.20	122,041.01
4.13 2045 MTP Update: PI# 0016087 (\$200k)	160,000.00	0.00	40,000.00	200,000.00
FY 2021 Section 5303 Transit Planning Funds				
Transit Planning Work Elements - Task 5	FTA - Federal (80%)	State -GDOT (10%)	Local (10%)	Subtotal Transit Funds
5.1 (44.21.00) Program Support & Admin.	7,200.00	900.00	900.00	9,000.00
5.2 (44.23.01) Long Range Trans. Planning - Sys. Level	20,000.00	2,500.00	2,500.00	25,000.00
5.3 (44.24.00) Short Range Transportation Planning	16,884.00	2,110.50	2,110.50	21,105.00
5.4 (44.25.00) Transportation Improvement Plan	4,800.00	600.00	600.00	6,000.00
Total Section 5303 Transit Planning Funds	48,884.00	6,110.50	6,110.50	61,105.00
TOTAL ALL SOURCES	\$306,516.81	\$6,110.50	\$70,518.70	\$383,146.01



5b. Draft FY 2021 UPWP: 30-day review (action)

Suggested Motion:

Motion to recommend that the Policy Committee release draft FY 2021 UPWP for a 30-day public comment period.

5c. 2020-2045 MTP status update & prioritization exercise

- Study Overview Refresher
- Project Status / Next Steps
- Priority Ranking Exercise
- Questions

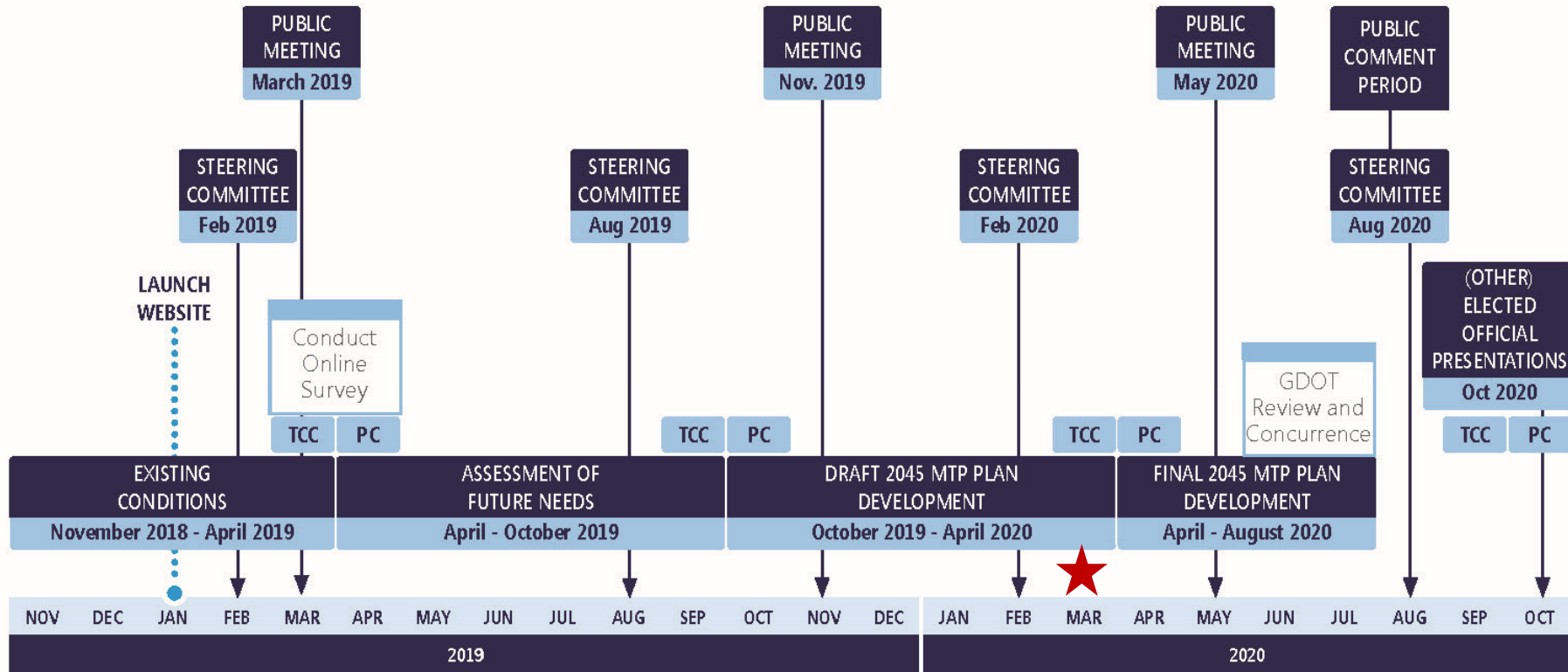
Study Overview

What is a Metropolitan Transportation Plan (MTP)?

- ▶ Formerly the Long-Range Transportation Plan
- ▶ Single-most important document produced by HAMPO
- ▶ Federal legislation mandates an update every 5 years and requires a performance-based process
- ▶ Covers a minimum 20-year planning horizon (2045)
- ▶ Governs expenditures of federal and state highway dollars
- ▶ Includes all modes of transportation



Study Overview: Schedule



Legend: PC = Policy Committee TCC = Technical Coordinating Committee



Project Status Update

- ▶ At your last meeting:
 - *Recommended Unconstrained Project List for PC Adoption*
 - *Gathered feedback on Priority Ranking from Technical Subcommittee, Countywide Retreat, and HAMPO CAC*
- ▶ Since your last meeting:
 - Hosted 2 Technical Subcommittee Meetings
 - Received PC Approval of 2045 Unconstrained Project List
 - Completed and submitted 5th TDM Network
 - Performed project assessments for each 2045 MTP project and compiled results
 - Developed prioritization tool to assist Technical Subcommittee with development of 2045 Cost Constrained Project List



2045 Priority Ranking

HAMPO 2045 METROPOLITAN TRANSPORTATION PLAN - PERFORMANCE BASED PRIORITIZATION RANKING

HAMPO 2045 Goals	Public Survey Ranking	Public Workshops Ranking	Technical Subcommittee Ranking	HAMPO CAC Ranking	Countywide Retreat Ranking	Average Ranking
Promote Quality of Life and Protect Existing Resources	7	7	3	6	3	5.20
Improve Safety and Security	2	3	1	1	1	1.60
Invest in a Multimodal System	3	4	6	8	6	5.40
Promote Preservation & Management of Existing System	1	2	7	3	7	4.00
Invest in Mobility Options	5	1	5	7	5	4.60
Promote Economic Development and Support Freight	6	5	2	2	2	3.40
Promote Resiliency and Reliability	4	6	8	5	8	6.20
Enhance Travel & Tourism	8	8	4	4	4	5.60

Rank HAMPO 2045 Goals

1 = Highest Priority 8 = Lower Priority



2045 Priority Ranking

HAMPO 2045 MTP - PROJECT PERFORMANCE SUMMARY

			ADDT/ADDT		RELIABILITY				SAFETY AND SECURITY										ECONOMIC DEV. / HEIGHT		TRAVEL AND TOURISM		MULTIMODAL		ENVIRONMENT AND QUALITY OF LIFE				OTHER FACTORS	
PROJECT ID	PROJECT NAME	COUNTY	BASE ADT	2045 ADTT	BASE TRUCK	BRIDGE RATING	BASE LOS	BASE V/C	FUTURE LOS	FUTURE V/C	TOTAL VEHICLE CRASHES	RATE OF CHARGES (PER 100M VMT)	TOTAL BKE / 100M VMT	# OF CHARGES WITH INJURY/FATALITIES	# OF CHARGES WITH INJURY/FATALITIES	# OF VEHICULAR CHARGES WITH INJURY	# OF VEHICULAR CHARGES WITH FATALITY	RATE OF FATALITIES (PER 100M VMT)	RATE OF INJURIES (PER 100M VMT)	SUPPORTS PROGRESS MOVEMENT	SUPPORTS SPENDING ACCESS	SUPPORTS ACCESS TO TOURISM ATTRACTION	PLANNED BICYCLE / PEDESTRIAN FACILITIES	EXISTING / PLANNED SERVICE	IMPACTS HISTORIC RESOURCES	IMPACTS ENVIRONMENTAL RESOURCES	IMPACTED BY SEA LEVEL RISE (INCH)	ABILITY TO IMPLEMENT 1+2	LOCAL SUPPORT	
154	Sandy Run/Parish Trail Connector	Hesseville	3,700	3,700	0.00%	-	C	0.44	C	0.47	0.58	0.58	0.58	0.58	0.58	0.58	0.58	0.58	0.58	NO	NO	YES	NO	NO	NO	NO	NO	NO	NO	SOMEWHAT
306	SR 120/General Service Road Access Improvements	Hesseville	7,350	7,350	0.00%	-	E	0.86	D	0.87	0.86	0.86	0.86	0.86	0.86	0.86	0.86	0.86	0.86	NO	YES	YES	YES	YES	YES	YES	YES	YES	YES	YES
307	South Main Street Widening	Hesseville	5,545	5,545	0.00%	-	D	0.82	E	0.82	0.82	0.82	0.82	0.82	0.82	0.82	0.82	0.82	0.82	NO	NO	YES	YES	YES	YES	YES	YES	YES	YES	YES
310	SR 19 / US 84 Safety and Access Management	Midway	10,000	13,478	0.00%	-	E	0.84	E	0.87	0.84	0.84	0.84	0.84	0.84	0.84	0.84	0.84	0.84	YES	YES	SOMEWHAT	YES	YES	YES	YES	YES	YES	YES	YES
312	SR 19 / US 84 Safety and Access Management	Pennington	23,400	23,400	0.00%	-	D	0.62	D	0.62	0.62	0.62	0.62	0.62	0.62	0.62	0.62	0.62	0.62	YES	YES	SOMEWHAT	YES	YES	YES	YES	YES	YES	YES	YES
314	SR 19 / US 84 Safety and Access Management	Liberty County	23,400	23,400	0.00%	83	D	0.73	D	0.72	0.73	0.73	0.73	0.73	0.73	0.73	0.73	0.73	0.73	YES	YES	SOMEWHAT	YES	YES	YES	YES	YES	YES	YES	SOMEWHAT
322	SR 19 / US 84 Safety and Access Management	Hesseville/Liberty/Hamilton/Watkinsville	13,467	16,502	0.00%	65.4	C	0.76	D	0.78	0.76	0.76	0.76	0.76	0.76	0.76	0.76	0.76	0.76	YES	YES	YES	YES	YES	YES	YES	YES	YES	YES	YES
322	SR 19 / US 84 Safety and Access Management	Hesseville	10,100	10,100	0.00%	-	E	0.85	E	0.85	0.85	0.85	0.85	0.85	0.85	0.85	0.85	0.85	0.85	YES	YES	YES	YES	YES	YES	YES	YES	YES	YES	YES
333	SR 18C/General Street Way	Hesseville	5,705	5,705	0.00%	-	B	0.57	C	0.59	0.59	0.59	0.59	0.59	0.59	0.59	0.59	0.59	0.59	NO	YES	YES	YES	YES	YES	YES	YES	YES	YES	YES
354	SR 19C/General Street Way	Hesseville	5,400	5,400	0.00%	-	D	0.70	D	0.68	0.68	0.68	0.68	0.68	0.68	0.68	0.68	0.68	0.68	NO	YES	YES	YES	YES	YES	YES	YES	YES	YES	YES
359	Pennington Lane Bypass	Pennington	4,000	4,000	0.00%	-	D	0.65	D	0.65	0.65	0.65	0.65	0.65	0.65	0.65	0.65	0.65	0.65	NO	YES	YES	YES	YES	YES	YES	YES	YES	YES	YES
369	General Hwy/US 17 Widening	Midway / Liberty County	5,110	5,110	0.00%	65.4	A	0.19	A	0.24	0.24	0.24	0.24	0.24	0.24	0.24	0.24	0.24	0.24	NO	NO	SOMEWHAT	YES	YES	YES	YES	YES	YES	YES	YES
371	Oldham Hwy/US 84 Safety	Midway / Liberty County	8,850	8,850	0.00%	-	C	0.49	C	0.45	0.45	0.45	0.45	0.45	0.45	0.45	0.45	0.45	0.45	YES	YES	YES	YES	YES	YES	YES	YES	YES	YES	YES
375	General Hwy/US 84 Safety	Midway / Liberty County	8,850	8,850	0.00%	-	F	0.55	F	0.55	0.55	0.55	0.55	0.55	0.55	0.55	0.55	0.55	0.55	NO	NO	YES	YES	YES	YES	YES	YES	YES	YES	YES
311	General Hwy/US 84 Safety	Hesseville	4,000	5,391	2.00%	-	A	0.00	D	0.68	0.68	0.68	0.68	0.68	0.68	0.68	0.68	0.68	0.68	NO	NO	YES	YES	YES	YES	YES	YES	YES	YES	YES
321	SR 19 / US 84 Safety and Access Management	Midway	10,000	10,000	0.00%	81.5	F	0.86	F	0.86	0.86	0.86	0.86	0.86	0.86	0.86	0.86	0.86	0.86	NO	NO	YES	YES	YES	YES	YES	YES	YES	YES	YES
311	SR 19 / US 84 Safety and Access Management	Liberty County	7,600	10,243	0.00%	70.6	D	0.70	D	0.67	0.67	0.67	0.67	0.67	0.67	0.67	0.67	0.67	0.67	YES	YES	SOMEWHAT	YES	YES	YES	YES	YES	YES	YES	YES
350	General Hwy/US 17 Widening	Rockburn / Liberty County	2,950	3,470	18.00%	80.8	C	0.47	C	0.55	0.55	0.55	0.55	0.55	0.55	0.55	0.55	0.55	0.55	NO	NO	YES	YES	YES	YES	YES	YES	YES	YES	YES
338	SR 18A/General St. US 17 Widening	Midway	4,800	5,470	0.00%	75.5	F	0.80	F	0.80	0.80	0.80	0.80	0.80	0.80	0.80	0.80	0.80	0.80	YES	YES	YES	YES	YES	YES	YES	YES	YES	YES	YES
338	SR 11/US 17 Cooper Hwy Widening	Rockburn / Liberty County	2,940	2,940	18.17%	83.7	C	0.60	C	0.60	0.60	0.60	0.60	0.60	0.60	0.60	0.60	0.60	0.60	YES	YES	YES	YES	YES	YES	YES	YES	YES	YES	YES
310	SR 19 / US 84 Safety and Access Management	Pennington	23,400	23,400	0.00%	-	D	0.75	D	0.73	0.73	0.73	0.73	0.73	0.73	0.73	0.73	0.73	0.73	YES	YES	SOMEWHAT	YES	YES	YES	YES	YES	YES	YES	YES
322	Cooper Hwy/US 17 Widening	Rockburn / Liberty County	4,800	4,800	0.00%	-	C	0.47	C	0.48	0.48	0.48	0.48	0.48	0.48	0.48	0.48	0.48	0.48	NO	NO	YES	YES	YES	YES	YES	YES	YES	YES	YES
311	SR 19 / US 84 Safety and Access Management	Liberty County	24,200	24,200	0.00%	77.7	D	0.75	D	0.74	0.74	0.74	0.74	0.74	0.74	0.74	0.74	0.74	0.74	YES	YES	SOMEWHAT	YES	YES	YES	YES	YES	YES	YES	SOMEWHAT
001000	US 17 Street Widening	Hesseville	5,890	5,890	0.00%	-	E	0.86	F	0.87	0.86	0.86	0.86	0.86	0.86	0.86	0.86	0.86	0.86	NO	NO	YES	YES	YES	YES	YES	YES	YES	YES	YES
344	Hesseville Region (system segment)	Liberty County	2,340	2,340	0.00%	-	B	0.36	C	0.42	0.42	0.42	0.42	0.42	0.42	0.42	0.42	0.42	0.42	NO	NO	YES	YES	YES	YES	YES	YES	YES	YES	YES
304	Hwy 17 Intersection Upgrade	Liberty County	10,000	13,478	0.00%	-	D	0.60	D	0.54	0.54	0.54	0.54	0.54	0.54	0.54	0.54	0.54	0.54	YES	YES	YES	YES	YES	YES	YES	YES	YES	YES	YES
001100	US 17 Intersection Upgrade	Liberty County / Hesseville / Midway	23,700	23,700	0.00%	81.5	C	0.47	D	0.66	0.66	0.66	0.66	0.66	0.66	0.66	0.66	0.66	0.66	NO	NO	YES	YES	YES	YES	YES	YES	YES	YES	YES
001115	US 17 Intersection Upgrade	Liberty County/Hesseville / Midway	23,700	23,700	0.00%	81.5	C	0.47	D	0.66	0.66	0.66	0.66	0.66	0.66	0.66	0.66	0.66	0.66	NO	NO	YES	YES	YES	YES	YES	YES	YES	YES	YES
323	General Hwy/US 17 Widening	Liberty County / Hesseville	5,890	5,890	0.00%	60.9	F	0.89	F	0.89	0.89	0.89	0.89	0.89	0.89	0.89	0.89	0.89	0.89	NO	NO	YES	YES	YES	YES	YES	YES	YES	YES	YES
301	General Hwy/US 17 Widening	Liberty County / Hesseville	5,890	5,890	0.00%	60.9	F	0.89	F	0.89	0.89	0.89	0.89	0.89	0.89	0.89	0.89	0.89	0.89	NO	NO	YES	YES	YES	YES	YES	YES	YES	YES	YES
301	General Hwy/US 17 Widening	Liberty County / Hesseville	5,890	5,890	0.00%	60.9	F	0.89	F	0.89	0.89	0.89	0.89	0.89	0.89	0.89	0.89	0.89	0.89	NO	NO	YES	YES	YES	YES	YES	YES	YES	YES	YES
301	General Hwy/US 17 Widening	Liberty County / Hesseville	5,890	5,890	0.00%	60.9	F	0.89	F	0.89	0.89	0.89	0.89	0.89	0.89	0.89	0.89	0.89	0.89	NO	NO	YES	YES	YES	YES	YES	YES	YES	YES	YES
301	General Hwy/US 17 Widening	Liberty County / Hesseville	5,890	5,890	0.00%	60.9	F	0.89	F	0.89	0.89	0.89	0.89	0.89	0.89	0.89	0.89	0.89	0.89	NO	NO	YES	YES	YES	YES	YES	YES	YES	YES	YES
301	General Hwy/US 17 Widening	Liberty County / Hesseville	5,890	5,890	0.00%	60.9	F	0.89	F	0.89	0.89	0.89	0.89	0.89	0.89	0.89	0.89	0.89	0.89	NO	NO	YES	YES	YES	YES	YES	YES	YES	YES	YES
301	General Hwy/US 17 Widening	Liberty County / Hesseville	5,890	5,890	0.00%	60.9	F	0.89	F	0.89	0.89	0.89	0.89	0.89	0.89	0.89	0.89	0.89	0.89	NO	NO	YES	YES	YES	YES	YES	YES	YES	YES	YES
301	General Hwy/US 17 Widening	Liberty County / Hesseville	5,890	5,890	0.00%	60.9	F	0.89	F	0.89	0.89	0.89	0.89	0.89	0.89	0.89	0.89	0.89	0.89	NO	NO	YES	YES	YES	YES	YES	YES	YES	YES	YES
301	General Hwy/US 17 Widening	Liberty County / Hesseville	5,890	5,890	0.00%	60.9	F	0.89	F	0.89	0.89	0.89	0.89	0.89	0.89	0.89	0.89	0.89	0.89	NO	NO	YES	YES	YES	YES	YES	YES	YES	YES	YES
301	General Hwy/US 17 Widening	Liberty County / Hesseville	5,890	5,890	0.00%	60.9	F	0.89	F	0.89	0.89	0.89	0.89	0.89	0.89	0.89	0.89	0.89	0.89	NO	NO	YES	YES	YES	YES	YES	YES	YES	YES	YES
301	General Hwy/US 17 Widening	Liberty County / Hesseville	5,890	5,890	0.00%	60.9	F	0.89	F	0.89	0.89	0.89	0.89	0.89	0.89	0.89	0.89	0.89	0.89	NO	NO	YES	YES	YES	YES	YES	YES	YES	YES	YES
301	General Hwy/US 17 Widening	Liberty County / Hesseville	5,890	5,890	0.00%	60.9	F	0.89	F	0.89	0.89	0.89	0.89	0.89	0.89	0.89	0.89	0.89	0.89	NO	NO	YES	YES	YES	YES	YES	YES	YES	YES	YES
301	General Hwy/US 17 Widening	Liberty County / Hesseville	5,890	5,890	0.00%	60.9	F	0.89	F	0.89	0.89	0.89	0.89	0.89	0.89	0.89	0.89	0.89	0.89	NO	NO	YES	YES	YES	YES	YES	YES	YES	YES	YES
301	General Hwy/US 17 Widening	Liberty County / Hesseville	5,890	5,890	0.00%	60.9	F	0.89	F	0.89	0.89	0.89	0.89	0.89	0.89	0.89	0.89	0.89	0.89	NO	NO	YES	YES	YES	YES	YES	YES	YES	YES	YES
301	General Hwy/US 17 Widening	Liberty County / Hesseville	5,890	5,890	0.00%	60.9	F	0.89</																						

Next Steps

- ▶ Incorporate data from GDOT TDM 5th Network
- ▶ Technical Subcommittee review of project performance screening tool
 - Use Prioritization Scores to rank projects
 - Constrain project list
- ▶ MPO Action on Constrained List
- ▶ Complete MTP Report
 - Agency Review
 - Public Comment
 - MPO Adoption



5d. FY2020 UPWP Amendment #6 (administrative)

Administrative Modification #1: The UPWP modification reflects administrative budgetary changes to support ongoing HAMPO activities. Funds have been reallocated, by phase and tasks, to sustain remaining HAMPO activities for FY 2020. Total Federal, state and local match amounts have not changed.

- Reduce 3.1 SE Data from \$20,000 to \$18,564.75 (Decrease of \$1,435.25)
- Increase 3.2 Land Use Monitoring from \$4,000 to \$5,435.25 (Increase of \$1,435.25)

AGENDA
Hinesville Area Metropolitan Planning Organization
Technical Coordinating Committee (TCC)
Historic Court House – Room 2100
March 26, 2020 @ 9:00 AM

6. Other Business
7. Public Comments
 - a. Call for Comments from the Public
8. Schedule
 - a. Next regularly scheduled meeting is May 14, 2020
9. Adjourn