



Hinesville Area Metropolitan Planning Organization

100 Main Street, Suite 7520 Hinesville, Georgia 31313
Phone: 912-408-2030 Fax: 888-520-8007

Jeff Ricketson, AICP, Executive Director

Mayor Daisy Pray, Policy Committee Chair

November 19, 2015

Krystal F. Harris, East Georgia Branch Chief
Georgia Dept. of Transportation
Office of Planning- 5th Floor
600 West Peachtree St. NW
Atlanta, GA 30308

ATTN: Morgan Lynn Simmons, Planner Associate

Dear Ms. Harris:

RE: HAMPO Metropolitan Planning Area

On November 19, 2015, the HAMPO Policy Committee approved by resolution HAMPO's Metropolitan Planning Area. Please see the attached resolution and MPA exhibit. If acceptable, please submit this for the Governor's consideration.

The planning area was coordinated with Ms. Simmons for conformance with the applicable rules. If you have any questions please contact Nils Gustavson at (912) 408-2039 or via email at ngustavson@thelcpc.org

Sincerely,

Jeff Ricketson, AICP
Executive Director
HAMPO/LCPC

**RESOLUTION OF THE
HINESVILLE AREA METROPOLITAN PLANNING ORGANIZATION
APPROVING THE
METROPOLITAN PLANNING AREA BOUNDARY**

WHEREAS, on February 14, 2007 the U.S. DOT published the final rules incorporating changes to the Code of Federal Regulations due to the passage of the legislation, Safe, Accountable, Flexible, Efficient Transportation Equity Act: a Legacy for Users (SAFETEA-LU) and now Moving Ahead for Progress in the 21st Century (MAP-21), and these require that the Metropolitan Planning Organization, in cooperation with participants in the planning process and others, develop and update as necessary the Hinesville Metropolitan Planning Area (MPA); and,

WHEREAS, the Hinesville Area Metropolitan Planning Organization (HAMPO) has been designated by the Governor of the State of Georgia as the metropolitan planning organization responsible for conducting transportation planning activities in the Hinesville urbanized area, which consists of urbanized Long County, Liberty County, Fort Stewart Military Reservation, the Town of Allenhurst, and the Cities of Flemington, Gum Branch, Hinesville, Midway, Riceboro and Walthourville; and

WHEREAS, the urban transportation planning regulations require that the product of a planning process be certified as in compliance with all applicable requirements of the law and regulations; and,

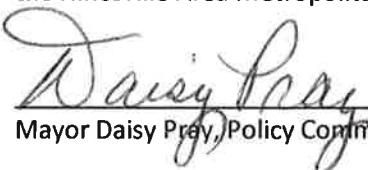
WHEREAS, the staff of the Hinesville Area Metropolitan Planning Organization and the Georgia Department of Transportation have reviewed the organization and activities of the planning process and found them to be in compliance with the requirements of the law and regulation; and,

WHEREAS, the locally developed and adopted process for public participation has been followed in the development of the MPA; and,

NOW, THEREFORE, BE IT RESOLVED that the Hinesville Area Metropolitan Planning Organization adopts the boundary for the Metropolitan Planning Area as set forth in the document attached to this Resolution;

BE IT FURTHER RESOLVED that the Hinesville Area Metropolitan Planning Organization Policy Committee finds that the requirements of applicable law and regulation regarding urban transportation planning have been met and authorizes the Executive Director of the Liberty Consolidated Planning Commission to execute a joint certification to this effect with the Georgia Department of Transportation, if necessary.

CERTIFICATION, we hereby certify that the above is a true and correct copy of a Resolution adopted by the Hinesville Area Metropolitan Planning Organization Policy Committee on November 19, 2015.



Mayor Daisy Gray, Policy Committee Chair

Nov 19, 2015

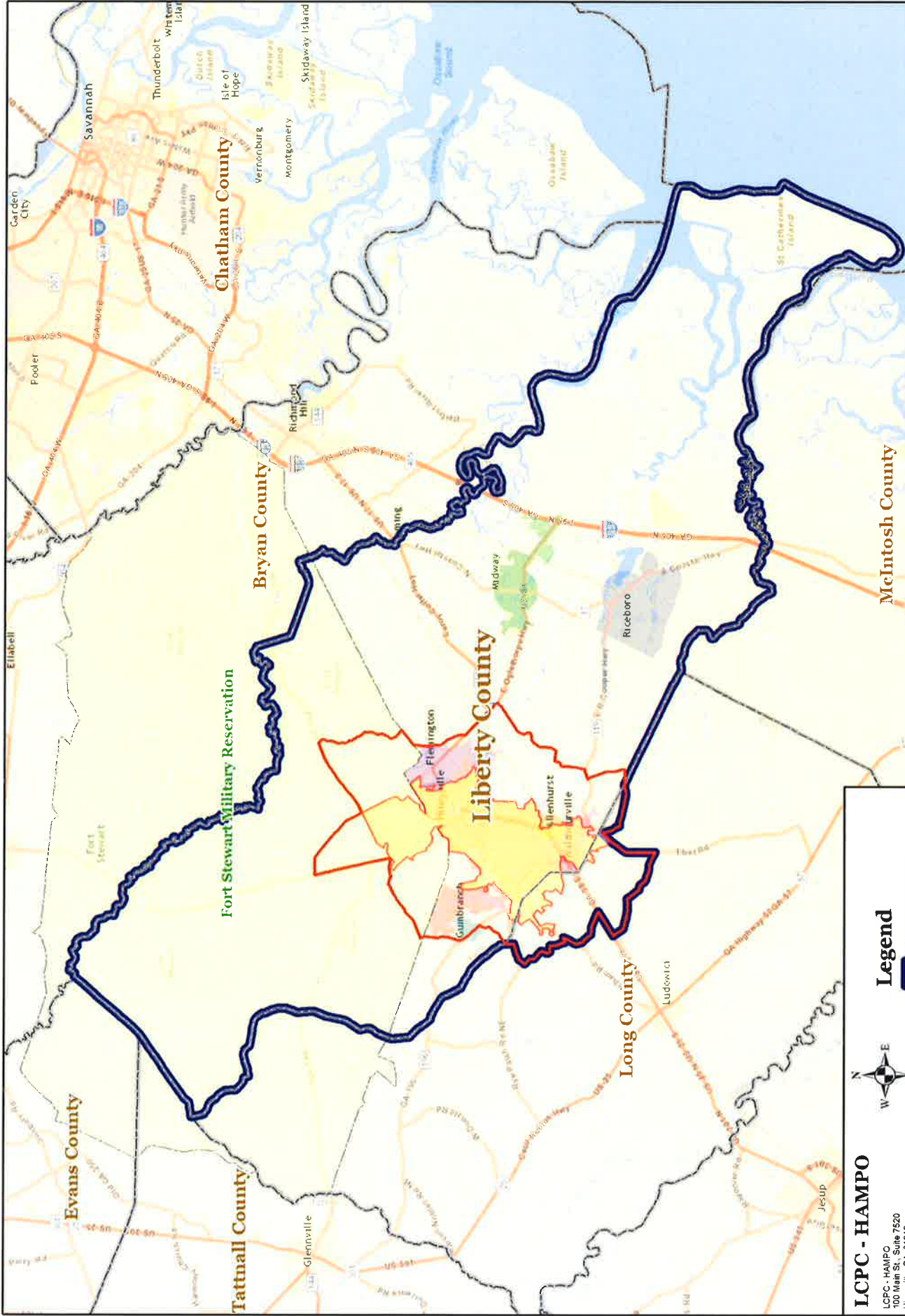
date

ATTEST:


Jeff Rickerson, AICP; LCPC Executive Director

11/19/15

date



Hinesville Area Metropolitan Planning Organization Metropolitan Planning Area

LCPC - HAMPO
 LCPC - HAMPO
 100 Main St., Suite 7520
 Hinesville, GA 31313

Nils Gustafson
 Planning and Transportation Engineer
 (912) 409-2089 ngustafso@lhcpc.org
 File: HAMPO Boundary, Planning Area v3

Date: 10/15/2015

1:360,000

Legend

- HAMPO MPA
- Hinesville UAB '13
- Census UZA '10

0 1 2 3 4 5 Miles

N
W E
S